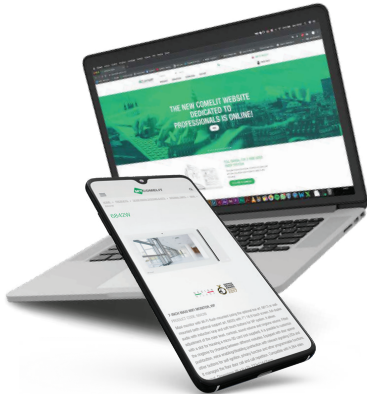


Introducing LogiFire: the innovative, simple & functional fire alarm

from



### Manage Your Systems

The Cloud platform allows you to manage buildings in an agile way, and the introduction of the interactive map allows you to identify them quickly.

### App and/or Web-page

You can manage your buildings both from the app and from the web-page, this allows you to work wherever you are.

### Easy Sharing

The via Cloud management allows the installer to share the configuration with the property manager in seconds, saving both a lot of time!

## ADDRESSABLE CONTROL PANELS



Two versions with between 2 and 8 loops, with a large 7-inch colour touchscreen designed to guarantee a simple and instant interface. **This ease of use** contrasts with the great complexity of the internal control panel functions, structured and designed to **respond promptly to every operative requirement**.

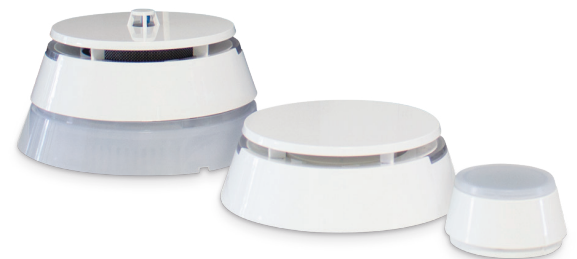
Then there is its fundamental **ability to integrate with the other sub-systems**: the control panel communicates with the Comelit voice evacuation system, but also with the IP video door entry system. The system can also be integrated with third-party building management systems using MODBUS protocol, and with **the Horus monitoring system**: graphic software which integrates fire alarm, intruder alarm, video surveillance and video entry in a single platform to make the security manager's job easier.

## DEVICES

The LogiFire range offers a broad selection of **detection and signalling devices**. The **minimalistic style** of these devices, in particular the detectors, is the result of combining an in-depth analysis of functional aspects with a return to pure architectural lines, while its compact and elegant design and the lack of obstructions in the air inlet zone optimises flow, **thereby limiting turbulence and minimising the risk of false alarms**.

Likewise, the choice of a precise architectural language makes this new range a subtle element, intentionally camouflaged and therefore perfect for every environment, with the purpose of intelligent monitoring without attracting too much attention. A **perfect blend of form and substance**, then, built onto an audio-visual base which flashes and rings in the event of an alarm.

The stylish and elegant **design** of the detectors has received several **international awards**.



All devices are backwards compatible with the Comelit ATENA range



### LogiProg SOFTWARE



The new **LogiProg software** is a tool available to MJ Flood for the **configuration and management** of the entire Comelit addressed range.

The **simple and intuitive interface** allows linear programming of the control panel parameters, such as the descriptions of the individual devices, zones, logics, timings and delays required during the system startup phase, even in OFF-LINE mode, so that the MJ Flood installer can pre-program the system without being directly connected to the control panel. Connection to the control panel takes place via **mini USB cable or directly in TCP/IP mode**.

The software can also be used to download a copy of the programming in EXCEL format, the control panel event log and the maintenance report, with a degree of contamination specified for each individual detector.

### ADVANTAGES OF THE RANGE



#### 64 Panels Network

The 64 Panels Network technology used in LogiFire can be done with **TCP/IP** connection or **RS485**. In this last case, RS485 allows **redundant connection** between them, with a **distance of 1km between individual network components**. Redundancy also guarantees correct operation and a normal stream of information, even if one of the two cables forming the control panel loop is cut off/shorted. The ideal solution for **extensive systems with distributed control centres** such as logistics, hospitals, airports...

RS485

EVAC

#### BUS EVAC

LogiFire series control panels can be interfaced using **BUS native communication** directly with Comelit **EVAC control panels** 49CCO002-49CCO004-49CCO006. A maximum of 5 control panels can be connected on the same link, for a total of 2500W over 30 Evac Zones. The integrated cause/effect matrix and activation logic make it possible to send Alarm or Evacuation messages to each zone, with the delays anticipated by the evacuation procedure, and to guarantee a **safe and precise evacuation**.



EN54-13

#### Standard EN54-13

Standard EN54-13 specifies and certifies the requirements for compatibility and the options for connecting the components of a fire detection and alarm system. This is in order to guarantee **system integrity and operation**. This **highly important certification obtained by the LogiFire range** is also cited in the Fire Prevention Code, Chapter S.7.5 AFD Systems, as a **compulsory** requirement in order to consider the solution as compliant in terms of the correct design and planning, installation and operation of the fire detection system.



BIM

#### BIM

**Digital BIM (Building Information Modelling) models for the entire LogiFire range** are available, containing all the most relevant technical information. The use of these models makes **design and planning easier** even in the most complex situations and allows the development of a **decidedly safer and more effective fire protection strategy**.

Choosing the Comelit LogiFire range means choosing innovative, yet simple and functional products and relying on a company such as MJ Flood - which supports its customers at every turn - to provide **constant assistance** throughout every phase of their work.

An example of this is the wide range of services available, including:

- **training and refresher courses** at any of our 9 branches throughout Ireland
- **advice during the design and planning phase** for more complex systems
- **technical support by telephone and on site**, with a fast response to queries and requests for information, plus on-site assistance

Trust in our professionals; you will be able to make full use of all the tailored services and benefits we offer you!



Contact us today to arrange your free, no obligation consultation, telephone 01 689 6390 or email [securityinfo@mjflood.ie](mailto:securityinfo@mjflood.ie)